

DIGITALSAFE

Installation Instructions / Cut Sheet

Tools Needed:

- Tape measure
- Drill with hex bolt driver
- 4 - 2" hex head screws (included)
- Level
- Stud sensor
- Keyhole drywall saw
- Safety glasses
- Masking tape

1. Select a location on an interior wall that's convenient yet hidden away. (Example: the wall inside a closet or pantry, behind a door or in a spare bedroom.) Remember the security flange adds 2"1/2 inches on the sides, top and bottom. Allow space for flange when picking your safe location.
2. Use a stud sensor to locate the two studs between which you plan to place the safe.
3. Mark the studs with masking tape.
4. Use the level to place a horizontal strip of masking tape to represent the top of the safe (**figure A**). The top of the safe should be just about the user's eye level.
5. Measure down 15.375 inches (the height of the safe) and use the level to place a horizontal strip of masking tape to represent the bottom of the safe. Stop at this point and reexamine the rectangle you have marked with masking tape. It should measure 14.5 inches wide and 32.5 inches high.
6. Turn off the circuit breaker(s) for nearby electrical outlets and light fixtures. Cut a small hole inside the masking tape rectangle and feel behind the wall to make sure no plumbing equipment or electrical wires are behind it (**figure B**).
7. Using a keyhole saw cut out the opening for the safe. Hold the saw at an angle to avoid cutting into the wall behind the one you're cutting (**figure C**). To make the job easier, start at the bottom, cut the two sides, and finish by cutting the top line. When you have finished cutting the hole, remove the piece of the wall you have cut and discard it.
8. Attach the security flange to the safe with the four lugs provided (if it is not already attached). Place the safe into the opening (**figure D**). Drill pilot holes into the studs from inside the safe (**figure E**). Place the level on top of the security flange and level the safe. Attach the safe to the studs using the 4 - 2" hex head screws.

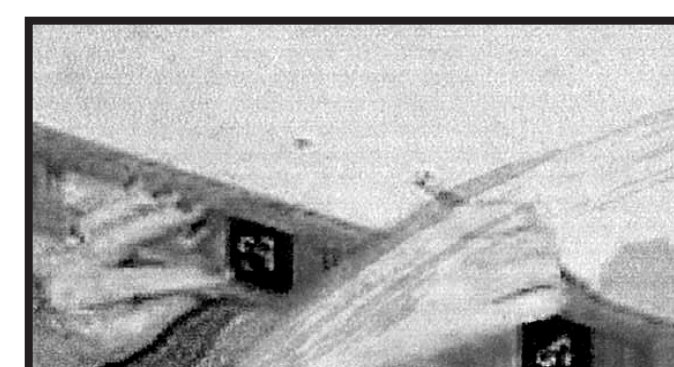


Figure A



Figure B

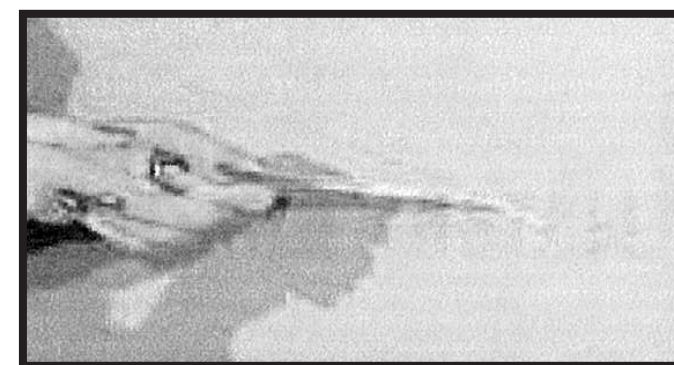


Figure C



Figure D



Figure E

Flange
2 1/2"

Cut Here ✂

Cut Here ✂

Cut Here ✂

Cut Here ✂

30"

32"

14 1/2"

19 1/2"

Hidden Compartment

3"

12"

Please Note:
Hidden compartment
will go behind drywall

Diagram does not
represent accurate
size and dimensions